

Ceramic High Pass Filter

HFTC-9R5+

50Ω 1300 to 3500 MHz



Maximum Ratings

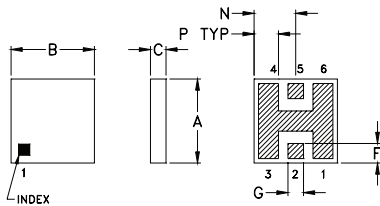
Operating Temperature	-55°C to 100°C
Storage Temperature	-55°C to 125°C

Permanent damage may occur if any of these limits are exceeded.

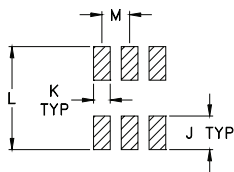
Pin Connections

RF IN	2
RF OUT	5
GROUND	1,3,4,6

Outline Drawing



PCB Land Pattern

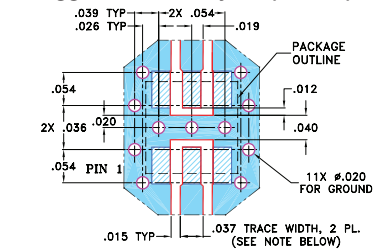


Suggested Layout,
Tolerance to be within ±.002

Outline Dimensions (inch/mm)

A	B	C	D	E	F	G	H
.150	.150	.028	--	--	.035	.028	--
3.81	3.81	0.71	--	--	0.89	0.71	--
J	K	L	M	N	P	wt	
.060	.030	.184	.050	.075	.044	grams	
1.52	0.76	4.67	1.27	1.91	1.12	0.15	

Demo Board MCL P/N: TB-233 Suggested PCB Layout (PL-112)



- NOTES: 1. TRACE WIDTH IS SHOWN FOR ROGERS RO4350B WITH DIELECTRIC THICKNESS 0.020" ± 0.0015"; COPPER: 1/2 OZ. EACH SIDE. FOR OTHER MATERIALS TRACE WIDTH MAY NEED TO BE MODIFIED.
2. BOTTOM SIDE OF THE PCB IS CONTINUOUS GROUND PLANE.
DENOTES PCB COPPER LAYOUT WITH SMOBC (SOLDER MASK OVER BARE COPPER)
DENOTES COPPER LAND PATTERN FREE OF SOLDER MASK

Features

- miniature size, 0.15"X0.15"
- low profile, 0.028" height
- low pass-band insertion loss, 1.0 dB typ.
- excellent input power handling, 14W
- hermetically sealed

Applications

- sub-harmonic rejection
- transmitters/receivers
- dc blocking

CASE STYLE: FR933
PRICE: \$3.75 ea. QTY. (10-49)

+ RoHS compliant in accordance with EU Directive (2002/95/EC)

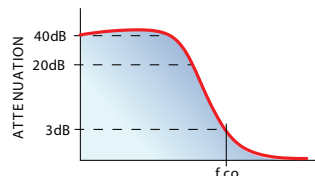
The +Suffix has been added in order to identify RoHS Compliance. See our web site for RoHS Compliance methodologies and qualifications.

Electrical Specifications (T_{AMB}=25°C)

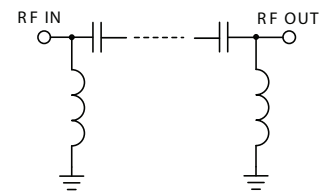
STOP BAND (MHz)	f _{co} , MHz Nom.	PASSBAND (MHz)	VSWR (:1)		POWER INPUT* (W)	MARKING	NO. OF SECTIONS	
			Stopband	Passband				
(loss > 40 dB)	(loss > 20 dB)	Typ.	Typ.	Typ.				
DC-600	750	950	1300-3500	18	1.3	14	HF7	7

* Derate linearly to 6W at 100°C ambient.

typical frequency response

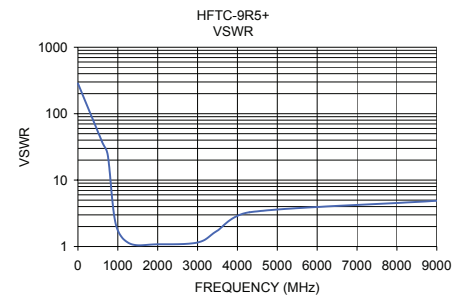
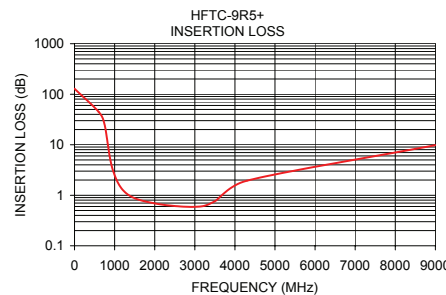


electrical schematic



Typical Performance Data at 25°C

Frequency (MHz)	Insertion Loss (dB)	VSWR (:1)
1.00	128.65	285.20
600.00	44.78	38.32
750.00	25.06	23.43
950.00	3.28	2.16
1300.00	1.08	1.11
2000.00	0.69	1.08
3000.00	0.59	1.15
3500.00	0.76	1.74
4300.00	1.94	3.28
9000.00	9.82	4.89



Mini-Circuits®
ISO 9001 ISO 14001 AS 9100 CERTIFIED

minicircuits.com

P.O. Box 350166, Brooklyn, New York 11235-0003 (718) 934-4500 Fax (718) 332-4661 For detailed performance specs & shopping online see Mini-Circuits web site

The Design Engineers Search Engine Provides ACTUAL Data Instantly From MINI-CIRCUITS At: www.minicircuits.com

IF/RF MICROWAVE COMPONENTS

REV. K
M121640
HFTC-9R5+
EDB-020602
AD/YB/CP/AM
090219