

High IP3

Frequency Mixer WIDE BAND

MCA-35H+

Level 17 (LO Power+17 dBm) 500 to 3500 MHz



CASE STYLE: DZ883
PRICE: \$8.95 ea. QTY.(10-49)

Maximum Ratings

Operating Temperature	-55°C to 100°C
Storage Temperature	-55°C to 100°C
RF Power	200 mW
IF Current	40 mA

Pin Connections

LO	10
RF	5
IF	3
GROUND	1,2,4,6,7,8,9

Features

- wide bandwidth, 500 to 3500 MHz
- excellent isolation, 30 dB typ. (1800-2500 MHz)
- good matching 2:1 VSWR typ. (over 1800-2800 MHz)
- small size 0.25"x0.3"x0.2"
- aqueous washable
- triple balanced mixer
- protected by US Patent 6,917,796

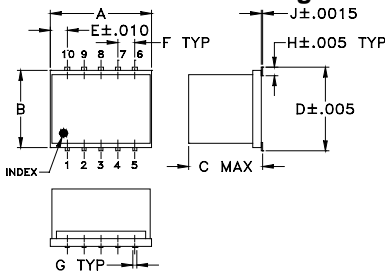
Applications

- cellular
- PCN
- PDC
- DECT
- PHS
- WiMAX

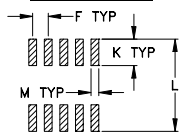
+ RoHS compliant in accordance with EU Directive (2002/95/EC)

The +Suffix has been added in order to identify RoHS Compliance. See our web site for RoHS Compliance methodologies and qualifications.

Outline Drawing



PCB Land Pattern

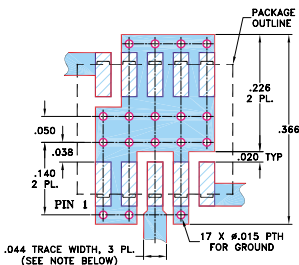


Suggested Layout.
Tolerance to be within ±.002

Outline Dimensions (inch/mm)

A	B	C	D	E	F	G
.30	.250	.190	.266	.050	.050	.012
7.62	6.35	4.83	6.76	1.27	1.27	0.30
H	J	K	L	M	wt	
.029	.004	.085	.296	.030	grams	
0.74	0.10	2.16	7.52	0.76	0.5	

Demo Board MCL P/N: TB-144 Suggested PCB Layout (PL-045)



- NOTES: 1. TRACE WIDTH IS SHOWN FOR ROGERS RO4350B WITH DIELECTRIC THICKNESS .020" ± .0015"; COPPER: 1/2 OZ. EACH SIDE. FOR OTHER MATERIALS TRACE WIDTH MAY NEED TO BE MODIFIED.
2. BOTTOM SIDE OF THE PCB IS CONTINUOUS GROUND PLANE.

- DENOTES PCB COPPER LAYOUT WITH SMOBC (SOLDER MASK OVER BARE COPPER)
- DENOTES COPPER LAND PATTERN FREE OF SOLDER MASK

Electrical Specifications (T_{AMB}=-55°C to 100°C)

FREQUENCY (MHz)	CONVERSION LOSS (dB)			LO-RF ISOLATION (dB)		LO-IF ISOLATION (dB)		IP3 at center band (dBm)
	LO/RF f _c -f _u	IF	Max.	Typ.	Min.	Typ.	Min.	
500-3500	10-1500	6.9	0.1	8.9				
500-800	10-300	6.3	0.1	7.7	18	11	32	26
800-1000	10-200	6.4	0.1	7.6	24	17	27	26
1000-1800	10-800	6.6	0.1	8.6	29	20	26	24
1800-2000	10-200	6.0	0.1	7.6	30	22	26	24
1800-2500	10-700	5.8	0.1	7.6	30	22	27	22
2000-3500	10-1500	6.5	0.1	8.6	29	17	22	23

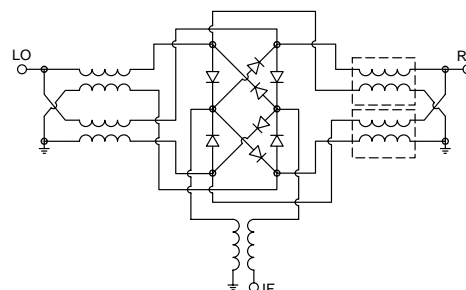
1 dB COMPR. +14 dBm typ.

• see individual band specs

Typical Performance Data

Frequency (MHz)		Conversion Loss (dB)	Isolation L-R (dB)	Isolation L-I (dB)	VSWR RF Port (:1)	VSWR LO Port (:1)
RF	LO	LO +7dBm	LO +7dBm	LO +7dBm	LO +7dBm	LO +7dBm
501.00	531.00	6.02	16.19	33.30	1.57	1.67
601.00	631.00	5.93	17.94	31.90	1.39	1.93
701.00	731.00	5.87	20.08	31.13	1.24	2.33
801.00	831.00	6.50	22.69	29.81	1.25	3.04
901.00	931.00	6.28	26.16	29.31	1.26	3.47
1001.00	1031.00	6.48	29.64	28.29	1.31	4.25
1301.00	1331.00	6.62	30.73	26.48	1.45	2.63
1501.00	1531.00	7.32	27.40	26.27	1.50	1.85
1801.00	1831.00	6.05	30.02	30.97	1.53	1.91
2000.00	2031.00	5.88	32.15	29.15	1.69	1.59
2101.00	2131.00	5.88	31.94	29.21	1.63	1.44
2301.00	2331.00	5.99	30.11	27.83	1.82	1.61
2501.00	2531.00	6.00	29.06	26.52	1.80	2.15
2701.00	2731.00	6.73	30.39	25.95	1.64	2.70
2901.00	2931.00	6.88	30.46	24.83	1.79	3.11
3100.00	3130.00	6.88	31.18	25.70	2.13	4.03
3200.00	3230.00	6.61	30.89	25.41	2.09	3.89
3300.00	3330.00	6.50	31.82	27.53	1.95	3.47
3400.00	3430.00	6.27	31.14	26.35	1.78	3.13
3500.00	3530.00	6.05	28.30	27.50	1.75	2.70

Electrical Schematic



Mini-Circuits
ISO 9001 ISO 14001 CERTIFIED

ALL NEW
minicircuits.com

P.O. Box 350166, Brooklyn, New York 11235-0003 (718) 934-4500 Fax (718) 332-4661 For detailed performance specs & shopping online see Mini-Circuits web site



The Design Engineers Search Engine Provides ACTUAL Data Instantly From MINI-CIRCUITS At: www.minicircuits.com

RF/IF MICROWAVE COMPONENTS

REV. E
M108294
ED-9595C/1
MCA-35H+
DJ/TD/CP/AM
080305
Page 1 of 2

