

Surface Mount Low Pass Filter

SCLF-225+ SCLF-225

50Ω DC to 225 MHz

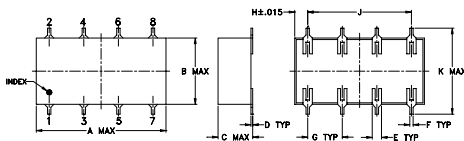
Maximum Ratings

Operating Temperature	-40°C to 85°C
Storage Temperature	-55°C to 100°C
Power Input	0.5W max.

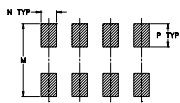
Pin Connections

INPUT	1
OUTPUT	8
GROUND	2,3,4,5,6,7

Outline Drawing



PCB Land Pattern



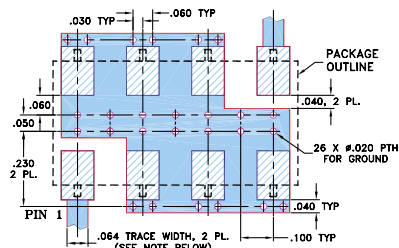
Suggested Layout,
Tolerance to be within ±.002

Outline Dimensions (inch)

A	B	C	D	E	F	G
0.75	0.38	0.28	0.01	0.05	0.02	0.2
19.05	9.65	7.11	0.25	1.27	0.51	5.08

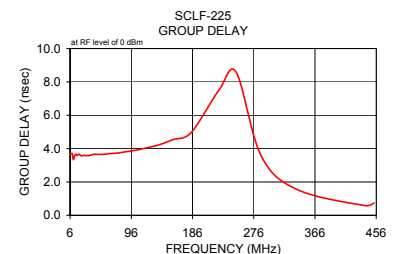
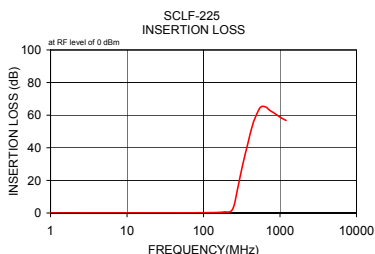
H	J	K	M	N	P	wt
0.075	0.6	0.45	0.47	0.1	0.15	grams
1.91	15.24	11.43	11.94	2.54	3.81	1.60

Demo Board MCL P/N: TB-187+ Suggested PCB Layout (PL-049)



- NOTES: 1. TRACE WIDTH IS SHOWN FOR ROGERS RO4350B WITH DIELECTRIC THICKNESS .030" ± .002"; COPPER: 1/2 OZ. EACH SIDE. FOR OTHER MATERIALS TRACE WIDTH MAY NEED TO BE MODIFIED.
2. BOTTOM SIDE OF THE PCB IS CONTINUOUS GROUND PLANE.

■ DENOTES PCB COPPER LAYOUT WITH SMOBC (SOLDER MASK OVER BARE COPPER)
▨ DENOTES COPPER LAND PATTERN FREE OF SOLDER MASK



Features

- wide selection of cut-off frequencies
- excellent rejection
- custom models available

Applications

- defense communications
- receivers/transmitters
- harmonic rejection of VCOs



CASE STYLE: YY161
PRICE: \$11.45 ea. QTY (1-9)

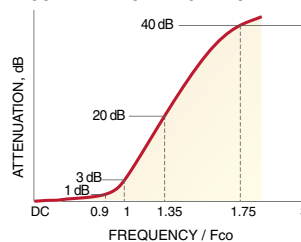
+ RoHS compliant in accordance
with EU Directive (2002/95/EC)

The +Suffix identifies RoHS Compliance. See our web site
for RoHS Compliance methodologies and qualifications.

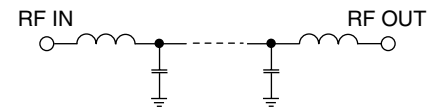
Low Pass Filter Electrical Specifications

PASSBAND (MHz)	f _{co} , (MHz) Nom.	STOPBAND (MHz)	VSWR (:1)
(loss < 1 dB)	(loss 3 dB)	(loss > 20 dB)	Pass band Typ.
DC-225	250	340-440	1.7
		440-1200	Stop band Typ.
			18

typical frequency response



Electrical Schematic



Typical Performance Data

Frequency (MHz)	Insertion Loss (dB)	Return Loss (dB)	Frequency (MHz)	Group Delay (nsec)
1.00	0.02	0.00	6.00	3.63
32.10	0.09	0.00	6.94	3.72
63.30	0.13	0.00	35.05	8.02
94.40	0.18	0.01	28.86	3.69
125.50	0.24	0.01	30.90	3.34
156.60	0.34	0.01	22.98	3.54
187.80	0.63	0.03	13.73	3.66
225.00	0.85	0.05	16.58	3.59
250.00	4.47	0.90	19.17	3.67
275.00	13.44	1.06	22.40	3.56
288.00	18.01	1.02	25.90	3.60
301.00	22.28	0.98	30.25	3.58
314.00	26.30	0.97	34.98	3.60
327.00	30.03	0.97	40.86	3.66
340.00	33.46	0.98	47.25	3.65
353.00	36.62	1.01	55.20	3.66
370.40	40.58	1.05	63.82	3.70
387.80	44.45	1.13	74.56	3.73
405.20	48.13	1.21	86.20	3.80
422.60	51.39	1.27	100.71	3.89
440.00	54.18	1.31	113.44	4.00
457.00	56.71	1.41	136.03	4.22
549.90	64.60	1.52	157.28	4.54
642.80	65.09	1.93	183.74	4.95
735.60	62.97	1.53	225.00	7.52
828.50	61.45	1.33	250.00	8.59

Mini-Circuits®
ISO 9001 ISO 14001 CERTIFIED

ALL NEW
minicircuits.com

P.O. Box 350166, Brooklyn, New York 11235-0003 (718) 934-4500 Fax (718) 332-4661 For detailed performance specs & shopping online see Mini-Circuits web site



The Design Engineers Search Engine Provides ACTUAL Data Instantly From MINI-CIRCUITS At: www.minicircuits.com

RF/IF MICROWAVE COMPONENTS

REV. D
M111708
SCLF-225
070716